



State of New Jersey

DEPARTMENT OF THE TREASURY
DIVISION OF ADMINISTRATION
NEW JERSEY PUBLIC BROADCASTING AUTHORITY
P. O. Box 777
TRENTON, NEW JERSEY 08625-0777

MIKIE SHERRILL
Governor

AARON BINDER
State Treasurer

DR. DALE G. CALDWELL
Lt. Governor

TELEPHONE (609) 777-5000 / FACSIMILE (609) 633-2920

RICHARD WILLIAMS
Executive Director

2026 REQUEST FOR PROPOSAL FOR LAWN CARE SERVICES AT MULTIPLE LOCATIONS

QUESTIONS & ANSWERS UPDATED 3-30-2026

Questions submitted to the New Jersey Public Broadcasting Authority for the 2026 Request for Proposal for Lawn Care Services at Multiple Locations (“RFP”) will be posted and answered here. Bidders are encouraged to frequently review this file.

Questions have been edited for clarity.

Q1. How can I obtain the required forms?

A1. There are links for all of the required forms in the RFP. They are also available on the Department of the Treasury website here: <https://nj.gov/treasury/purchase/forms.shtml>. The required price sheet is the final page of the RFP.

Q2. Has bi-weekly mowing been successfully implemented in prior years, or has weekly mowing been utilized in the past?

A2. Historically, these industrial sites have been sufficiently maintained through a bi-weekly mowing schedule. Bidders who prefer to establish a weekly mowing schedule may do so. The bid proposal should be submitted in the format attached to the RFP, and the “per service” pricing column should quote the total cost for each bi-weekly service period, regardless of the number of cuts during that time period. To be clear, a minimum of one cut per bi-weekly service period is required.

Q3. Can you provide aerial views of the two properties?

A3. Please see the last page of this questions and answers document for pictures of the service areas for both locations.

Q4. Is attendance at the onsite, pre-bid meetings mandatory to submit a bid response?

A4. No, participation in the onsite, pre-bid meeting is voluntary.

Q5. May vendors visit the sites independently, outside of the pre-bid meeting times, or are the sites secure locations?

A5. Vendors who wish to visit the sites should attend the pre-bid meetings. Sites are gated and monitored, secure locations. Vendors who are unable to attend the pre-bid meetings may utilize the photos on the last page of this questions and answers document to draft a bid response.

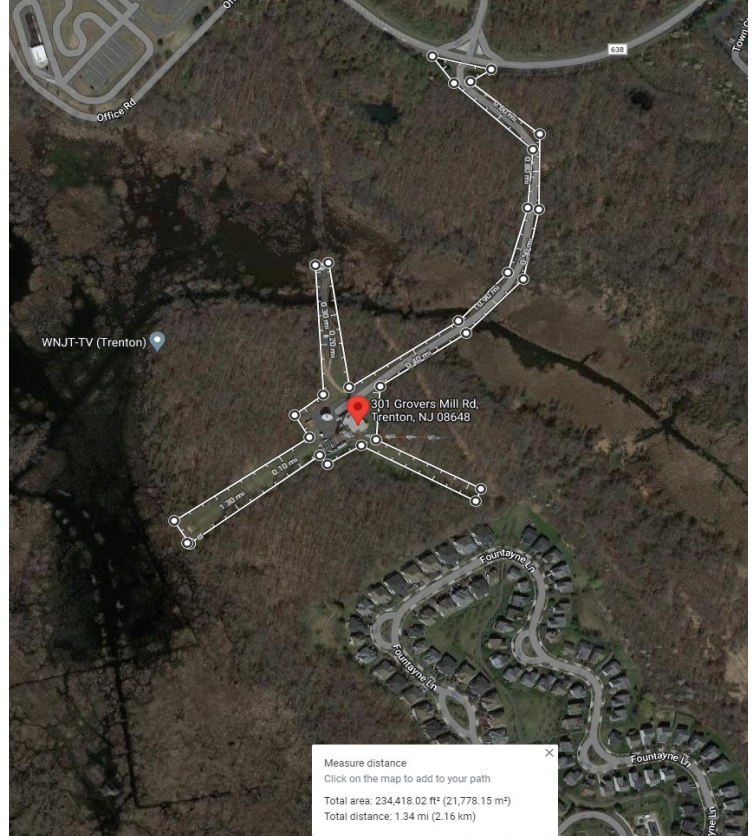
Q6. When are bids due?

A6. Bids must be submitted on or before March 31, 2026.

We have listed the Google map locations and outlined the affected areas for the NJPBA tower sites listed in the RFP.

Lawrence Tower:

<https://goo.gl/maps/TzX6jvnuvX5HHRZh6>



Waterford Tower:

<https://goo.gl/maps/spy9w7Dng2zPmCVv5>

